



AvePoint

AvePoint Inc

Available to purchase until 22/06/2028

AvePoint specialises in helping educational institutions analyse, optimise and manage Microsoft 365 storage to manage costs. AvePoint's solutions empower educators to transform data into a strategic asset by simplifying and automating data management.

## Key Facts

### Benefits

- Unique education license
- Preferential pricing
- Simplified SaaS product bundle
- Choice of 1 or 3-year license with annual or upfront billing
- Includes premium support
- Professional services for training, implementation and delivery

### Important Dates

**Agreement start:** 23 June 2025

**Agreement end:** 22 June 2028

**Subsequent invoice date:** Invoiced annually 3 months in advance of the licence anniversary date.

### Commitment Period

Institutions may participate in the Agreement at any time during the agreement period, and are bound by its Terms and Conditions, including payments, until the end of the Licence Period

### Licence Type

SaaS subscription based on the amount of data discovered and intelligently optimised.

### Eligible Institutions

Higher and Further Education and Research Councils in the United Kingdom, and to Universities and Colleges of Further Education in Ireland. Other organisations (including Further Education / Research Councils / Colleges) aligned with Jisc's charitable objectives of supporting education, research bodies and the public sector may ask to participate in the Agreement. Jisc will liaise with the Supplier about any such requests.

### Background Information

Since 2001, AvePoint's 20+ year partnership with Microsoft has produced best in class solutions that enable global organisations to extend and complement the latest Microsoft technologies that "right-size" data management, security and governance.

## Product Description

### Supplier Details

**Licensor:** AvePoint, UK Ltd, registered in England and Wales, whose registered office is 3 rd Floor, Watchmaker Court, 33 St. John's Lane, London, EC1M 4BJ

AvePoint delivers tailored solutions for the education sector, helping schools, colleges, and universities in the UK and worldwide enhance data security, streamline governance, and optimise Microsoft 365 storage. Through automated lifecycle policies, intelligent archiving, and cost-effective retention, institutions can efficiently manage data growth, reduce storage costs, and ensure secure, fast access to their data.

Supplier home page: <https://www.avepoint.com>

### Product Description

#### **AvePoint Opus Bundle: Discovery, Analysis & Intelligent Storage Optimisation**

##### **Discovery & Analysis:**

Scans the tenant and classifies inactive and ROT (Redundant, Obsolete, Trivial) data in your SharePoint, Teams and OneDrive environment, analyses the data, and then presents the inactive and ROT data results in intuitive dashboards.

##### **Intelligent Storage Optimisation:**

Based on the findings and recommended optimisation rules, take action to archive or destroy the inactive and ROT data to achieve your storage optimisation goals. The solution continues to automatically optimise any newly created data in SharePoint, Teams & OneDrive and to automate management of archived data to sustain the environment and control costs.

AvePoint professional services are available to support implementation, configuration and training or to provide a fully managed service.

Schedule a scoping call with AvePoint via Jisc to understand software and professional services requirements before ordering through the Chest Framework.

AvePoint has comprehensive user guides and on-demand learning paths to support customers.

#### **The AvePoint Difference: A Robust Information Management Strategy**

- **Turn Information into a Strategic Asset:** Transform your Microsoft 365 data into a strategic asset with AvePoint. Automate classification, enforce governance, and optimise storage to secure information and drive smarter decisions.
- **Optimise Retention and Reduce TCO:** Optimise retention policies and automate data classification with AvePoint to reduce Microsoft 365 storage costs and lower total cost of ownership without complex administration.
- **Effortlessly Classify Data and Unstructured Content:** Automatically identify, classify, and manage data, continuously monitoring and enforcing retention rules across SharePoint, Teams, and OneDrive.

For complete product descriptions, please visit [Storage Optimisation Management](#).

---

## Service and Support

### Trials

Please contact [help@chest.ac.uk](mailto:help@chest.ac.uk) to organise a guided demonstration.

### Product Documentation

Full product documentation and user guides available.

## Technical Support

Customer training is available and paid for requirements would be scoped on initial call. Comprehensive user guides and on-demand training courses are available free of charge.

Premium in-house 24/7/365 telephone, web conferencing, email and portal support included. AvePoint knows everyone could use a helping hand. Whether you've got questions about installation, found a glitch in the system, got locked out of your account, or need a little moral support, AvePoint have got your back. They are here to ensure you get the most out of your AvePoint investment.

[Support | AvePoint](#)

## Supplier Web Address

[Modernization, Data Resiliency & Control SaaS Operations in Your Workspace | AvePoint](#)

## System Releases, New Versions and Functionality

Details of release updates and/or new versions and/or new supporting documentation will be notified. AvePoint continually invests in product development and releases updates as often as once every two months to support new or updated functionality. This cadence allows AvePoint to regularly introduce new features and improvements while maintaining stability and alignment with customer needs.

## Method of Delivery

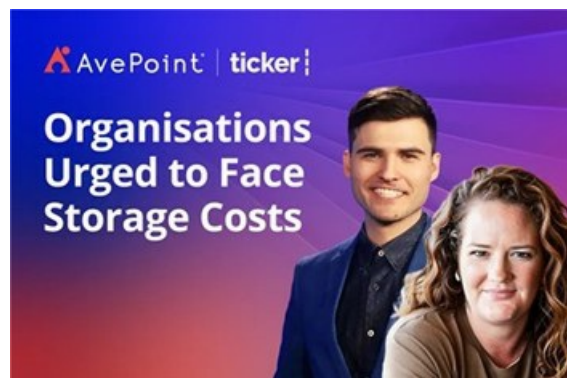
AvePoint will scope professional services requirements on the initial call with the customer. The customer can add the required number of days to their order for AvePoint to deliver the data discovery and subsequent data optimisation. AvePoint Professional Services days break down into 8 hourly increments for flexibility and value.

---

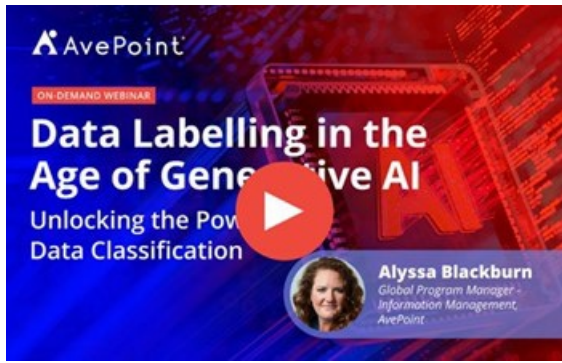
## Useful Resources

AvePoint's information management strategy is designed to deliver secure, compliant, and cost-effective control over Microsoft 365 data by transforming information from a liability into a strategic asset:

AvePoint's Director of Records & Information Management Strategy, Alyssa Blackburn, at Ticker News Insight on why it's important for organisations to manage their data and optimise their cloud storage as businesses continue to bear the brunt of the economic downturn.



This webinar directly addresses the pain points organizations face as unstructured data volumes surge, and it demonstrates practical, automated solutions that replace outdated manual processes.



---

## Terms and Conditions

**The AvePoint Agreement is not a Standard Chest Agreement, it is subject to the Licensor's own terms and conditions.**

**Licensor:** AvePoint, UK Ltd, registered in England and Wales, whose registered office is 3rd Floor, Watchmaker Court, 33 St. John's Lane, London, EC1M 4BJ

The Chest Order, together with the Licence Terms and Conditions, and any exceptions listed below, create a legally binding contract between your institution, organisation or company and the Licensor. Therefore please read the terms and conditions carefully and only submit a Chest Order if its terms and conditions are acceptable to your institution, organisation or company and you have the authority to make the financial commitment shown.

### Licence Type

The AvePoint Agreement is not a Standard Chest Agreement, it is subject to the Licensor's own terms and conditions, not the standard Chest licence for software. Please be sure to read the [AvePoint Terms and Conditions](#) carefully before purchasing AvePoint software under this agreement.

### Payment Terms

Chest is an Enterprise of Jisc. All Purchase orders must be made out to **Jisc Services Ltd, 4 Portwall Lane, Bristol, BS1 6NB to cover all charges plus VAT**. Payments are due within thirty days of the invoice date; recipients of late payments are entitled to interest in accordance with UK statutory provisions.

On receipt of a completed Order, and a Purchase Order (if required by the Institution) made payable to Jisc, Institutions will be invoiced depending on the licence and payment term selected. Invoices are payable within 30 days of the date of the invoice.

All purchases - annual payment option, they will be invoiced for year one immediately, with invoices for subsequent years to follow approximately three months prior to the licence anniversary date.

---

Commercial in confidence

Operating address: Chest (a Jisc Enterprise), 4 Portwall Lane, Bristol. BS1 6NB email: [help@chest.ac.uk](mailto:help@chest.ac.uk) tel: 0300 121 0878

Jisc (Registered Office), 4 Portwall Lane, Bristol, BS1 6NB | Charity No. 1149740 | Company No. 5747339